

AESQC[®] IMMUNOFLUORESCENCE ASSAY CONTROLS

The use of quality control materials and related tools helps laboratories identify, correct, and prevent analytical failures prior to releasing results.

AESQC IFA controls help labs monitor the performance of IFA methods. These reagents are composed of human serum available with different autoantibodies, and are designed to give positive results for specific autoantibody patterns according to their respective lot-specific certificates of analysis.

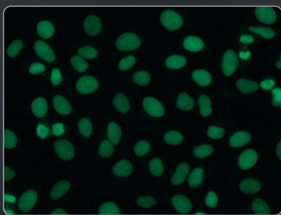
For AESKUSLIDES kits, the AESQC lot-specific pattern and reactivity are outlined in the QC datasheet supplied with each kit, and lot-specific reference images are made available at AESQC.com

AESQC IFA controls are unassayed, pre-diluted and should be run neat (undiluted) or in accordance with the instructions for use supplied by the manufacturer of the respective assay system.

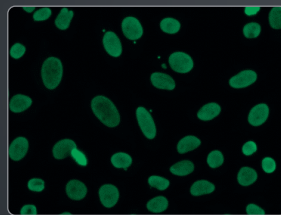
*Additional information, including **lot-specific reference images** for each product, is available at www.aesqc.com*

Examples of lot-specific reference images from AESQCANA01 (AC-1 pattern) available on www.aesqc.com

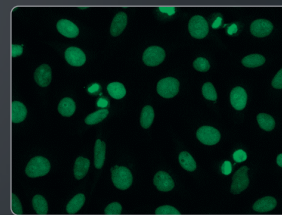
(Images from HELIOS AESKUSLIDES HEp-2)



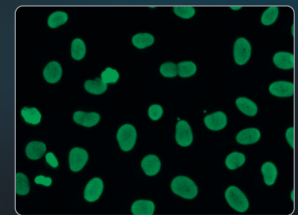
AESQCANA01 Lot #12487



AESQCANA01 Lot #52489



AESQCANA01 Lot #21190



AESQCANA01 Lot #09424

	AESQC IFA	REF Number	Presentation	Pattern / ICAP
ANA HEp-2	Negative	AESQCIFANEG	3 x 0.5 mL	AC-0
	Homogeneous	AESQCANA01	3 x 0.5 mL	AC-1
	Centromere	AESQCANA03	3 x 0.5 mL	AC-3
	Speckled	AESQCANA04	3 x 0.5 mL	AC-4
		AESQCANA05*	3 x 0.5 mL	AC-5
	Nucleolar	AESQCANA08*	3 x 0.5 mL	AC-8
		AESQCANA09	3 x 0.5 mL	AC-9
		AESQCANA10*	3 x 0.5 mL	AC-10
	Cytoplasmic	AESQCANA19*	2 x 0.5 mL	AC-19
		AESQCANA21	3 x 0.5 mL	AC-21
	AESQCANA22*	2 x 0.5 mL	AC-22	
ANCA	5 pattern Panel	AESQCIFANAP1	5 x 0.5 mL	AC-1, 3, 4, 9, 21
	C - ANCA	AESQCANCAC*	3 x 0.5 mL	Cytoplasmic
	P - ANCA	AESQCANCAP*	3 x 0.5 mL	Perinuclear
	X - ANCA	AESQCANCAX*	2 x 0.5 mL	Atypical
	2 pattern Panel	AESQCANCAP1*	2 x 0.5 mL	Cytoplasmic, Perinuclear
Tissues	APCA	AESQCTISAPCA*	3 x 0.5 mL	Anti-parietal cell
	ASMA	AESQCTISASMA*	3 x 0.5 mL	Anti-smooth muscle
	AMA	AESQCTISAMA*	3 x 0.5 mL	Anti-mitochondrial
	LKM	AESQCTISLKM*	2 x 0.5 mL	Anti-Liver Kidney Microsome
	3 pattern Panel	AESQCTISP1*	3 x 0.5 mL	APCA, ASMA, AMA

*Coming soon